

6 Heating

1 Tubular heaters

1 ATEX tubular heater FAW / FAW-C series for zone 1 and 2

These finned tubular heaters are designed to heat, among other things, analysis chambers, small work, storage areas and similar applications, warehouses, ... located in zone 1 or 2 hazardous areas where the flammable atmosphere is a group IIA, IIB or IIC gas. The standard version comes with a protective cage and is suited for floor mounting. Special brackets for wall mounting are available on request.

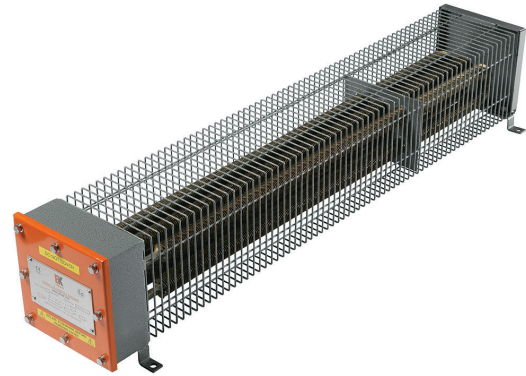
Ex II 2 G Ex e II T3/T4 Gb

Zone 0	✗	Zone 20	✗
Zone 1	✓	Zone 21	✗
Zone 2	✓	Zone 22	✗

LCIE00ATEX6013X

Specifications

Earthing	in- and external earthing bolt
Protection	IP66
Protective grid	standard
Elements	individually replaceable
Cable entry	1x M20 x 1,5
Mounting	floor mounting by means of supplied mounting feet
Ambiant temperature	-60°C - +40°C
Guideline	ATEX
Manufacturer	ExHeat



On request

- if required the heaters can be controlled of remote mounted thermostats available for use in safe or hazardous areas
- enclosure in stainless steel (FAW)
- T2 : -60°C - +60°C
- other tensions
- brackets for wall mounting

Ordering data

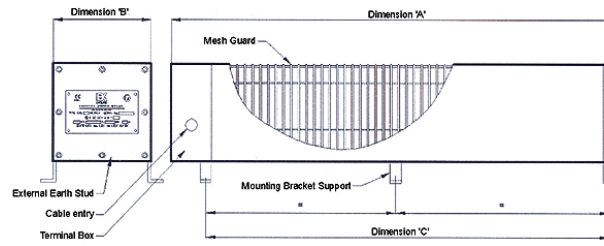
Code	Range	Housing	Voltage	Power	Temp. class	No. of supports	Weight
FAWC0250-T3-240	Compact	stainless steel	240V	250W	T3	2	5 kg
FAWC0500-T3-240	Compact	stainless steel	240V	500W	T3	2	6 kg
FAWC0750-T3-240	Compact	stainless steel	240V	750W	T3	2	6 kg
FAWC1000-T3-240	Compact	stainless steel	240V	1000W	T3	2	9 kg
FAW0250-T3-240	Standard	lightweight coated mild steel	240V	250W	T3	2	8 kg
FAW0500-T3-240	Standard	lightweight coated mild steel	240V	500W	T3	2	10 kg
FAW0750-T3-240	Standard	lightweight coated mild steel	240V	750W	T3	2	12 kg
FAW1000-T3-240	Standard	lightweight coated mild steel	240V	1000W	T3	2	14 kg
FAW1500-T3-240	Standard	lightweight coated mild steel	240V	1500W	T3	3	20 kg
FAW2000SB-T3-240	Standard	lightweight coated mild steel	240V	2000W	T3	3	34 kg
FAW2500-T3-240	Standard	lightweight coated mild steel	240V	2500W	T3	4	38 kg
FAW3000-T3-240	Standard	lightweight coated mild steel	240V	3000W	T3	4	42 kg
FAW0250-T4-240	Standard	lightweight coated mild steel	240V	250W	T4	3	13 kg
FAW0500-T4-240	Standard	lightweight coated mild steel	240V	500W	T4	3	17 kg
FAW0750-T4-240	Standard	lightweight coated mild steel	240V	750W	T4	3	21 kg
FAW1000-T4-240	Standard	lightweight coated mild steel	240V	1000W	T4	4	33 kg
FAW1250-T4-240	Standard	lightweight coated mild steel	240V	1250W	T4	4	38 kg
FAW1500-T4-240	Standard	lightweight coated mild steel	240V	1500W	T4	4	42 kg

6 Heating

1 Tubular heaters

1 ATEX tubular heater FAW / FAW-C series for zone 1 and 2

Dimensional sketches



Product code	Dimensions		
	A	B	C
FAWC0250-T3-240	350	161	282
FAWC050-T3-240	350	161	282
FAWC0750-T3-240	615	161	545
FAWC1000-T3-240	615	161	545
FAW0250-T3-240	971	161	860
FAW0500-T3-240	971	161	860
FAW0750-T3-240	971	161	860
FAW1000-T3-240	1221	161	1145
FAW1500-T3-240	1741	161	1670
FAW2000SB-T3-240	1221	272	1145
FAW2500-T3-240	1741	272	1670
FAW3000-T3-240	1741	272	1640
FAW0250-T4-240	1886	161	1784
FAW0500-T4-240	1886	161	1784
FAW0750-T4-240	1886	161	1784
FAW1000-T4-240	1886	272	1784
FAW1250-T4-240	1886	272	1784
FAW1500-T4-240	1886	272	1784