

8 Cable glands and accessories

1 Glands

7 Exe-plastic / metric thread

Suited for armoured and non-armoured cables. Sealing on outer sheath of the cable. Maximum strain relief because of a patented lamella system. Irreversible threads prevent stripping under high torque and protect against vibration.

Specifications

Protection	IP68 - 5 bar (30 min)
Material cable gland	polyamide (self-extinguishing)
Material closure	EPDM
Material O-ring	EPDM
Ambiant temperature	-40°C - +75°C

Ex II 2 G Ex e IIC Gb

Ex II 2 D Ex tb IIIC Db IP68

Zone 0	✗	Zone 20	✗
Zone 1	✓	Zone 21	✓
Zone 2	✓	Zone 22	✓

PTB13ATEX1015X



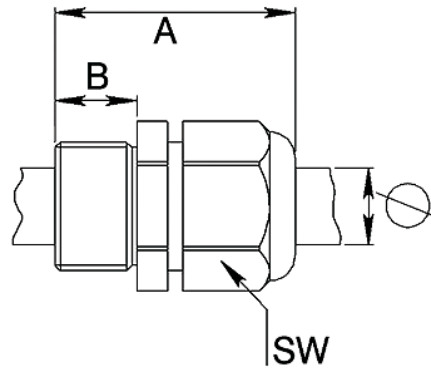
On request

- NPT thread

Ordering data

Product code	Thread	Cable diameter	
		Min	Max
GPEM1/1	M16 x 1.5	4,5	9
GPEM2/1	M20 x 1.5	7	13
GPEM3/1	M25 x 1.5	10	17
GPEM4/1	M32 x 1.5	13	21
GPEM5/1	M40 x 1.5	17	28
GPEM6/1	M50 x 1.5	23	35
GPEM7/1	M63 x 1.5	34	48
GPIM1/1	M16 x 1.5	4,5	9
GPIM2/1	M20 x 1.5	7	13
GPIM3/1	M25 x 1.5	10	17
GPIM4/1	M32 x 1.5	13	21
GPIM5/1	M40 x 1.5	17	28
GPIM6/1	M50 x 1.5	23	35
GPIM7/1	M63 x 1.5	34	48

Dimensional sketches



Product code	Dimensions		
	A	B	SW
GPEM1/1	31 - 37	9	20
GPEM2/1	36 - 45	10	24
GPEM3/1	38 - 47	10	29
GPEM4/1	42 - 51	12	36
GPEM5/1	52 - 65	12	46
GPEM6/1	59 - 72	14	55
GPEM7/1	64 - 78	15	68
GPIM1/1	31 - 37	9	20
GPIM2/1	36 - 45	10	24
GPIM3/1	38 - 47	10	29
GPIM4/1	42 - 51	12	36
GPIM5/1	52 - 65	12	46
GPIM6/1	59 - 72	14	55
GPIM7/1	64 - 78	15	68

Accessories

Code	Description
BS8	Plug for cable 8mm
BS13	Plug for cable 12mm
BS17	Plug for cable 17mm
BS21	Plug for cable 21mm