

8 Cable glands and accessories

2 Plugs

3 Exe plastic

Plugs are used to safely seal unused openings in enclosures and apparatuses. The plug is screwed in and fastened with a spanner on the outside.

Specifications

Marking	All plugs are marked with a certificate number and size.
Material	nylon
Thread	Metric
Protection	IP66
Ambiant temperature	-40°C - +80°C
Guideline	ATEX
Manufacturer	Wiska

Ex II 2 G Ex e II

Ex II 2 D Ex tD A21

Zone 0	✗	Zone 20	✗
Zone 1	✓	Zone 21	✓
Zone 2	✓	Zone 22	✓

PTB06ATEX1032X



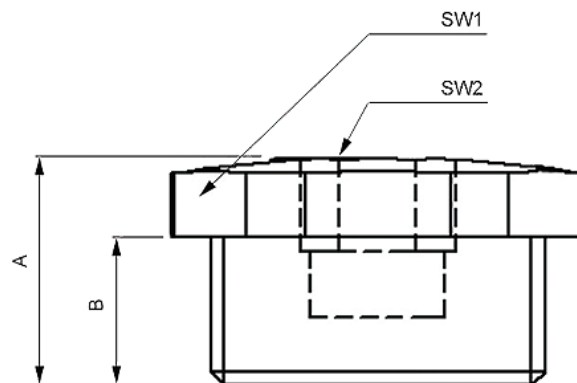
On request

- NPT thread

Ordering data

Code	Thread
PPEM1	M16x1,5
PPEM2	M20x1,5
PPEM3	M25x1,5
PPEM4	M32x1,5
PPEM5	M40x1,5
PPEM6	M50x1,5
PPEM7	M63x1,5
PPEM8	M75x1,5

Dimensional sketches



Product code	Dimensions			
	A	B	SW1	SW2
PPEM1	16	9,5	20	10
PPEM2	17,5	11,6	24	10
PPEM3	17	11	29	10
PPEM4	16,5	11	36	10
PPEM5	18	10	46	10
PPEM6	21	10	55	10
PPEM7	24	10	68	10